

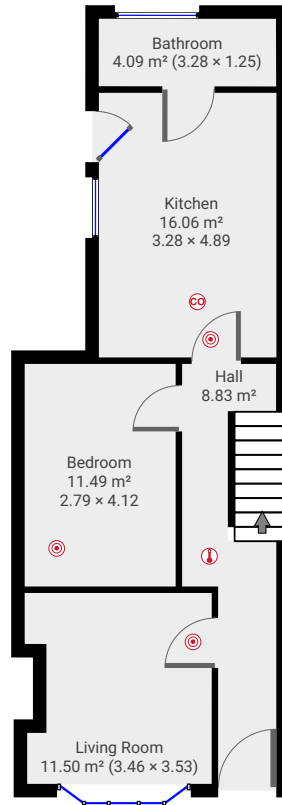
6 Claremont Terrace

TOTAL AREA: 118.07 m² • LIVING AREA: 118.07 m² • FLOORS: 3



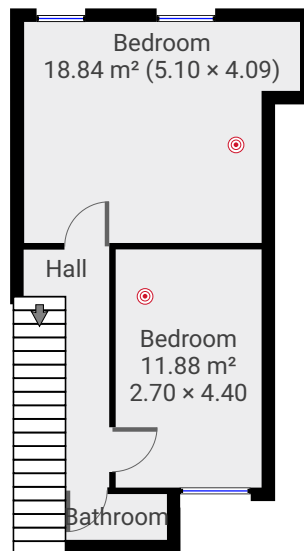
▼ Ground Floor

TOTAL AREA: 51.94 m² • LIVING AREA: 51.94 m² •

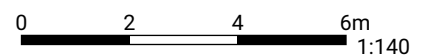


▼ 1st Floor

TOTAL AREA: 36.38 m² • LIVING AREA: 36.38 m² •



These particulars are believed to be accurate but they are not guaranteed to be so. They are intended only as a genuine guide and cannot be construed as any form of contract, warranty or offer. The details are issued on the strict understanding that any negotiations in respect of the property named herein are conducted through the landlord.



6 Claremont Terrace

TOTAL AREA: 118.07 m² • LIVING AREA: 118.07 m² • FLOORS: 3

▼ 2nd Floor

TOTAL AREA: 29.75 m² • LIVING AREA: 29.75 m² •

